

Workgroup

Socialization, Engagement, Health, and Nutrition

Outcome

S3. Older people and nourished and healthy in mind, body, and spirit.

Indicator & Source

% of adults 65 and older who report having good or excellent health (Texas Behavioral Risk Factor Surveillance System, Statewide BRFSS Survey).

Indicator Notes

This indicator includes all residents age 65 and older and the margin of error based on a 95-percent confidence interval is presented alongside each estimate.

OVERALL TREND: Bexar County, 2010-2015

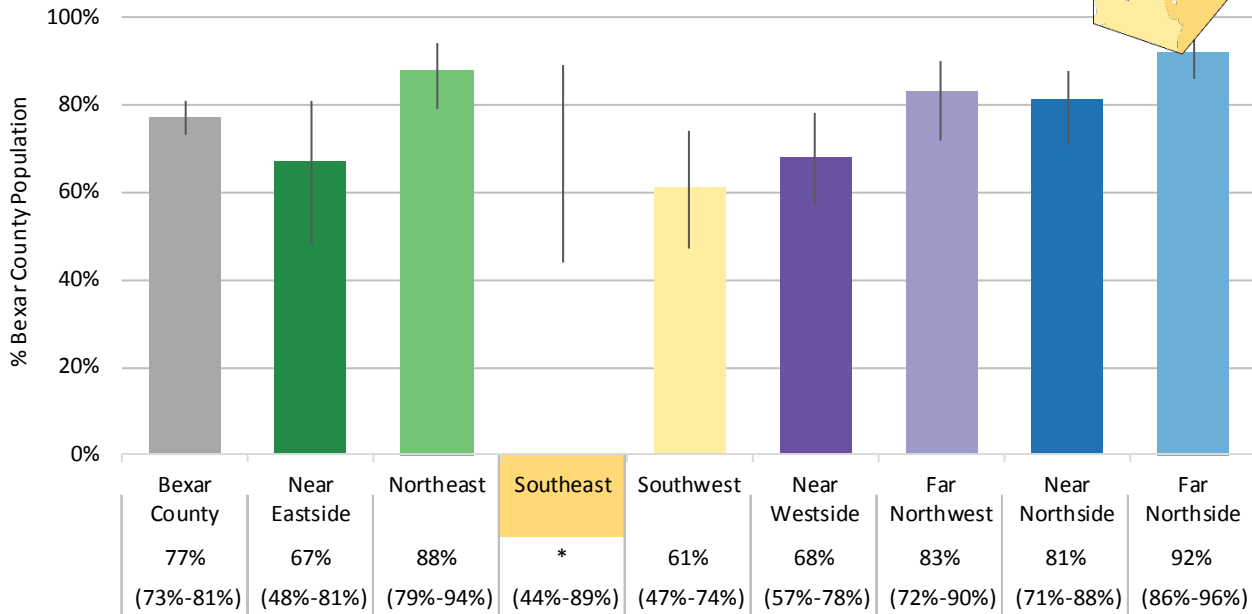
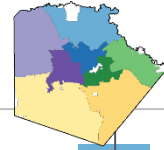
	2010*	2011	2012	2013	2014	2015
% of residents 65 and older with self-reported good or excellent health	NA	76.7%	68.3%	61.6%	71.6%	80.6%
(95% CI)	(NA)	(70.9-81.6)	(58.1-77.1)	(52.4-69.9)	(66.0-76.6)	(72.2-86.9)

Source: 2011-2015 Texas Behavioral Risk Factor Surveillance System, Statewide BRFSS Survey. *Due to methodologic changes 2010 BRFSS data is not available for comparison.

GEOGRAPHIC DISTRIBUTION: Bexar County, 2014

General Health Rating

Percentage of adults with self-reported good or excellent health by sector

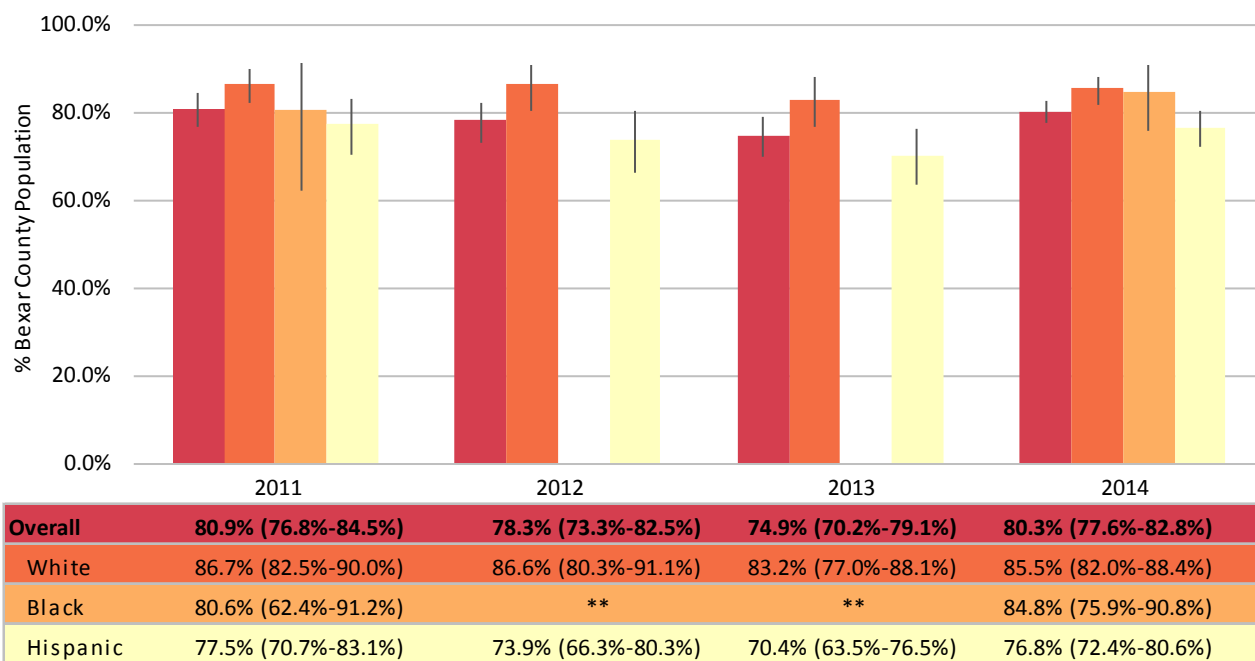


Source: Texas Behavioral Risk Factor Surveillance System; Statewide BRFSS Survey, 2011-2014 3-Year Average (with 90% CI).
 *90% confidence interval too wide to display estimate.

RACE/ETHNICITY: Bexar County, 2014

General Health Rating

Percentage of adults with self-reported good or excellent health by race/ethnicity



Source: Texas Behavioral Risk Factor Surveillance System, Statewide BRFSS Survey, 2011-2014. **Sample too small to report.