

The Alamo Regional Data Alliance

Alamo Area GIS Users Group

May 9, 2017



Community Information Now

Local data that's trustworthy, neutral, and timely

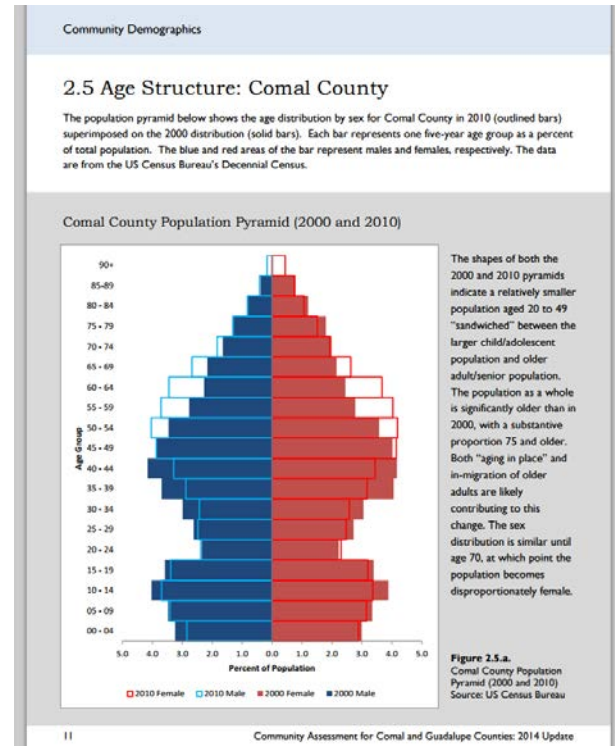
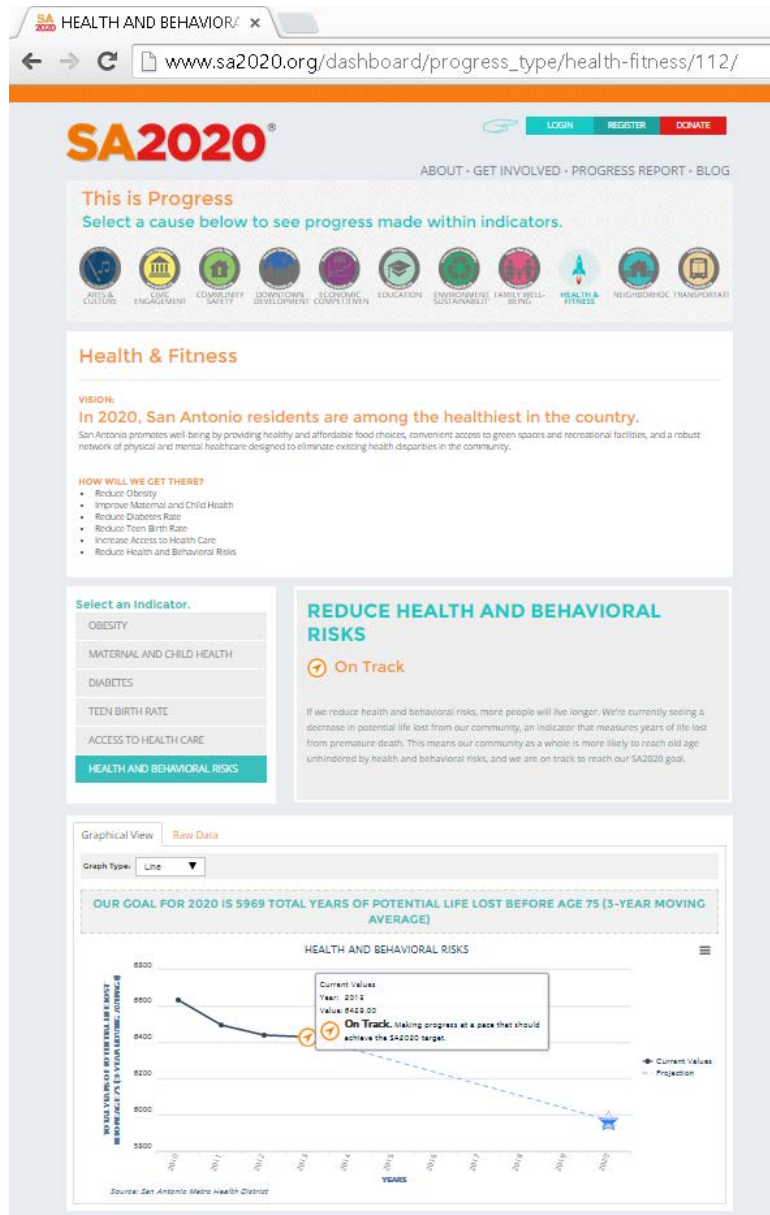
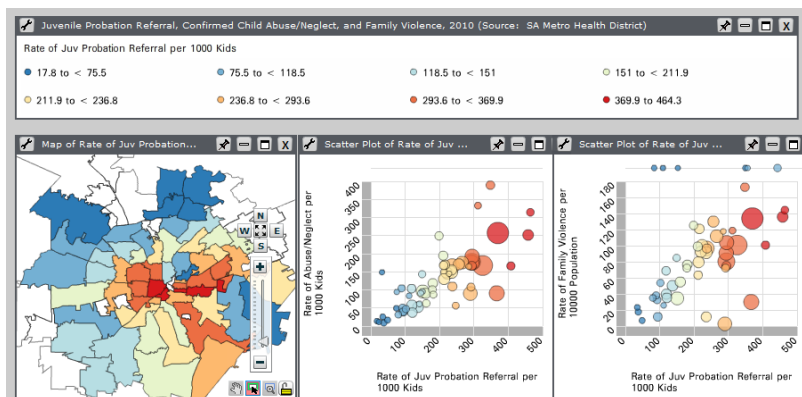
Laura McKieran, Executive Director

Quick Intro to CI:Now

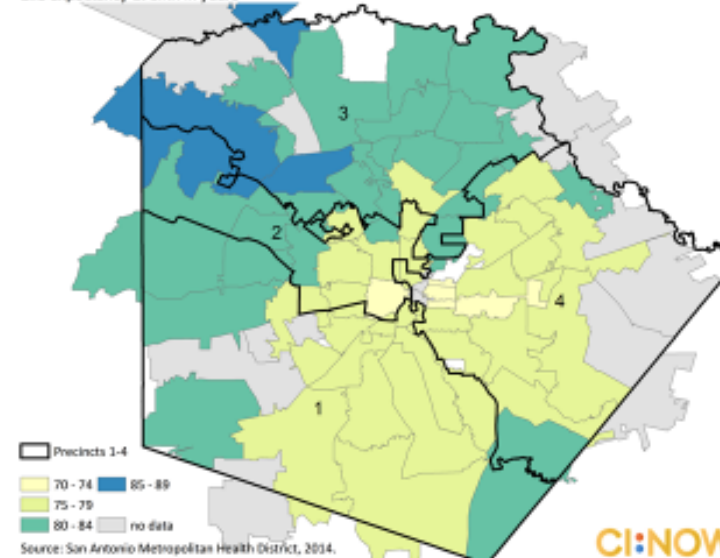
- Annual budget ~\$450K
- United Way is fiscal agent and longtime funder; launching as 501c3 in mid-2017
- Four staff + contracted tech services
- UT School of Public Health in SA is partner and staff “home”, plus academic resources, data access
- Geographic focus: Bexar, Comal, and 10 other counties surrounding
- Cover all issue areas, esp. education and health & human services
- Active local partner in National Neighborhood Indicators Partnership (NNIP)

Five ways we help

1. Open up access to timely, relevant, neutral data
2. Assess and monitor community conditions
3. Assist in understanding and using data
4. Consult on the development of outcomes/results and indicators and selection of data sources
5. Bring others together to build our local capacity to use data to improve quality of life: Alamo Regional Data Alliance



Life Expectancy by Zip Code for Bexar County Commissioners Precincts



Data Explorer

nowdata.cinow.info

Curated, searchable
repository of online data
resources

Live but maintenance not
funded

The screenshot shows the NOWDATA Data Explorer interface. At the top is the NOWDATA logo with the tagline "DISCOVER » CONNECT » ACT". Below the logo is a navigation bar with links for Home, About NOWDATA, and Contact Us. On the right side of the navigation bar are links for CI:NOW, NOWCastSA, and NOWTech. The main content area displays a list of data resources. The first resource is "Exploring: All Indicators" with subtext "Counties: Bexar," "Scopes: Block Group, Census Tract, Neighborhood, Parcel, Zip," and "Formats: interactive-map, static-map,". It also states "10 Indicators found." Below this is the "Housing and Transportation (H+T®) Affordability Index" with "Years: 2011 - 2011" and "2 Map: Statics, 2 Map: Interactive s, 4 Resources Total (view)". The next resource is "Zoning" with "Years: 2012 - 2012" and "1 Map: Interactive , 1 Resource Total (view)". This is followed by "Current Local Foreclosures" with "Years: 2012 - 2012" and "1 Report, 1 Map: Interactive , 2 Resources Total (view)". The next resource is "Walkability" with "Years: 2011 - 2012" and "1 Table, 5 Map: Interactive s, 6 Resources Total (view)". The final resource is "Eastside Promise Neighborhood Census Data" with "Years: 2000 - 2010" and "3 Tables, 1 Map: Static, 4 Resources Total (view)". On the right side of the interface is a search and filter panel. It includes a "Search for:" input field. Below this is a "Topic:" dropdown menu currently set to "All Topics", with a list of topics including "Built & Natural Environment", "Culture & Civic Vitality", "Education", "Employment & Economy", "Health and Safety", and "People". Below the topic menu is a "Limit by" section with checkboxes for "All", "Bandera", "Comal", "Gillespie", "Karnes", "Kerr", "Wilson", "Bexar", "Frio", "Guadalupe", "Kendall", and "Medina". At the bottom of the filter panel is a "Limit by Geographic Scope:" section with checkboxes for "Address", "Block Group", "City", "Congressional District", "County Precinct", "Metropolitan Area", "Other", "School District", "Voting Precinct", "Bexar Co. Assessment Sector", "Census Tract", "City Council District", "County", "County Sector", "Neighborhood", "Parcel", "State", and "Zip". Two yellow callout boxes are present: one pointing to the "All Topics" dropdown menu with the text "current selection criteria", and another pointing to the "Limit by" checkboxes with the text "change selection criteria".

current selection criteria

change selection criteria



New from CI:Now

New data tools, partnerships and grants, projects, and recognition of our work. Search by category or date.

Most recent

CI:Now talks walkability on TPR's The Source (March 22, 2017)

Healthy Cities panel presentation at National League of Cities (March 13, 2017)

SA2020 and CI:Now on TPR's The Source (January 24, 2017)

Panel: HASA HIE - Community Benefits of a Central Health Data Repository (January 17, 2017)

Kronkosky partners with CI:Now to learn more about adults with autism spectrum disorders (January 13, 2017)

CI:NOW

Search form

SEARCH

Find data

New from CI:Now

Reports and presentations

Online data tools

Partnerships and grants

Rebranded CI:Now ('08)

UTSPH staffing contract ('09)

AACIS formed (late 90s)

"Data Nirvana" meeting (2/16)

What's needed for a community to be good at using data?

Widespread...

1. culture of valuing data
2. data literacy
3. processes and structures to support engagement around data
4. good data management practices
5. access to data
6. access to help in using data effectively
7. collaborative and continual planning and coordinated action to build local capacity to use data



"Small Group":

Peter Bella, ImagineSA

Keo Cavalcanti, SAAFdn

Juan Gómez, UTSA

Laura McKieran, CI:Now

Richard Milk, SAHA

Henri Muñoz, UWSA

Clarissa Ozuna, CI:Now

Adrian Perez, COSA EDD

Lloyd Potter, UTSA

Leilah Powell, COSA Mayor's Office

Ginger Walker, P16Plus

Jef Waltman, tech consultant

Vision Statement

Explain your product in one phrase or sentence.

By establishing and supporting a culture of data-driven action, we will improve the quality of life for people in our region.

Target Group

Who are the target users of your product? Who are the target customers?

Citizen leaders and other members of the general public

Public and private sector policy and decision makers and their advisors

Other data consumers and communicators, including PR, communications, and advocacy

Researchers and analysts

Needs

What is the problem you are trying to solve?
Which goals do you want to achieve?

Wide access to relevant, quality and unbiased, timely data, sustainably provided

- Connected across sectors
- With common data definitions and standards
- Visualized and communicated effectively
- With transparency of data source, limitations, and how it has been transformed or analyzed
- With appropriate protections and permissions

Target groups understand and value the use of data for decision making.

Analysis services and tools for users without analysis capacity or interest

Training and technical assistance (e.g., coaching and consultation) to help target groups understand and use data and analysis effectively

Infrastructure and process for ongoing local data capacity building

Product

Give 3-5 of the top features you want to offer.

Central repository of shared public data available online freely and publicly

Central access point for shared protected data available as appropriate.

Platform for sharing analysis and presentations with internal and external colleagues

Data analysis services provided directly and/or via facilitated connections with researchers/analysts

Training, coaching, and consultation for target groups on understanding, using, and valuing data, including building internal capacity and strategy for data-driven decision making

Value

What are your business goals? What is the value of your product?

Inform decisions about resource allocation and implementation strategies

Monitor program and policy implementation and outcomes

Improve the effectiveness and efficiency of policies and programs

Improve the efficiency of working with data

Enable coordination and collaboration so that:

- all parties can access the same data at the same time
- organizations and unaffiliated individuals can collaborate across disciplines

Analyze risk and identify opportunities

Encourage mutual accountability through the transparent use of data for decision making and action

Based on Roman Pichler's Product Vision Board (<http://www.romanpichler.com/blog/agile-product-innovation/the-product-vision-board>)

Licensed under the Creative Commons CC BY-SA license



**United Way of San Antonio
and Bexar County**



Living Cities
NNIP
Code for America

AACIS formed (late 90s)

Rebranded CI:Now ('08)

UTSPH staffing contract ('09)

"Data Nirvana" meeting (2/16)

"Small group" formed (8/16)

Product Vision Board (9/16)

Alamo Regional Data Alliance (9/16)

Interim Steering Cmte (10/16)

CI:Now staffing (10/16)

Alliance convening (3/17)

Alamo Regional Data Alliance Vision-Phase Convening

San Antonio Central Public Library

Tuesday, March 28, 2017

10:00 AM to 12:00 PM

~68 attendees by invitation only

- First priority given to Feb '16 attendees
- Broad representation of:
 - local government, nonprofits, funders, academia, residents
 - data generators/collectors, intermediaries, analysts, users

MEETING AGENDA

Warm-Up – How do you use data?

- Go to www.menti.com and use code 34 24 4

Welcome – Laura McKieran, CI:Now

- Agenda review and meeting expectations
- Why are we here?

San Antonio's Effort to Collaborate Around Data – Mary Ellen Burns, United Way of San Antonio & Bexar County

- A short history of local data collaboration

Recent Call-to-Action – Leilah Powell, Office of the Mayor, City of San Antonio

- A re-cap of the February 2016 convening

Overview of Project Structure and Timeline – Laura McKieran, CI:Now

- Review of planning process

Q & A

- Go to www.slido.com and use code 3 4 2 4 4
- Submit and vote for questions

The Vision – Henrietta Muñoz, United Way of San Antonio & Bexar County

- An overview of the Alamo Regional Data Alliance vision and purpose

The Vision – Table Discussion

- In what ways would you and/or your organization gain from our community realizing this vision?
- Are there additional needs that are not currently included that you feel should be addressed for a culture of data-driven action to be realized?

Next Steps – Richard Milk, San Antonio Housing Authority

- An update of the upcoming work and outcomes

Next Steps – Table Discussion

- Are there any data you want to use but can't? If so, what is the barrier (i.e. cost, access)?

Q & A

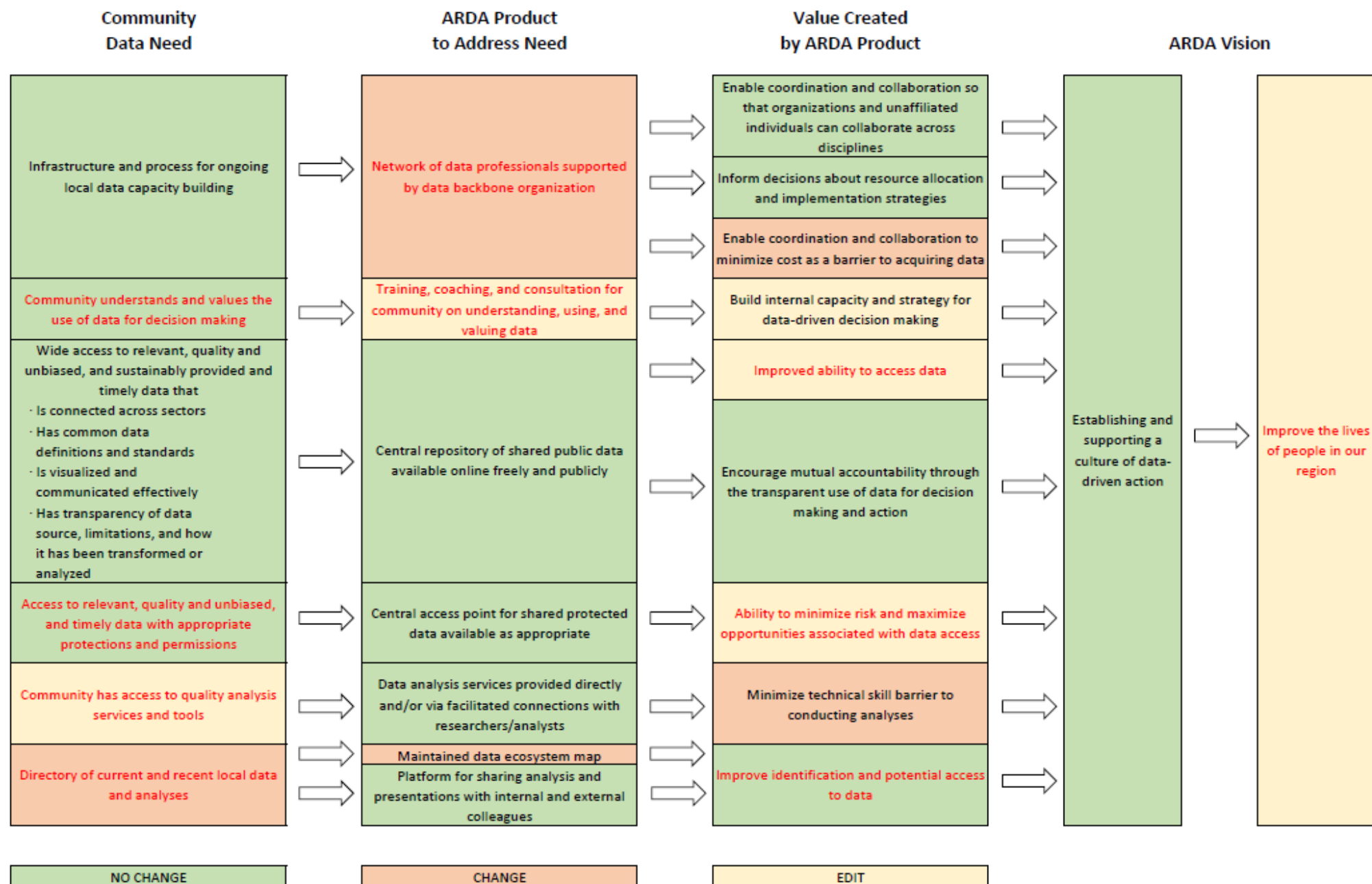
- Go to www.slido.com and use code 3 4 2 4 4
- Submit and vote for questions

Commitment to Continuous Engagement – Lloyd Potter, University of Texas at San Antonio

- An overview of how to get involved

Closing – Describe how you feel...

ARDA Vision: To improve the lives of people in our region by establishing and supporting a culture of data-driven action.



Community Data Need

Infrastructure and process for ongoing local data capacity building
Community understands and values the use of data for decision making
Wide access to relevant, quality and unbiased, and sustainably provided and timely data that: <ul style="list-style-type: none">· Is connected across sectors· Has common data definitions and standards· Is visualized and communicated effectively· Has transparency of data source, limitations, and how it has been transformed or analyzed
Access to relevant, quality and unbiased, and timely data with appropriate protections and permissions
Community has access to quality analysis services and tools
Directory of current and recent local data and analyses



ARDA Product to Address Need

Network of data professionals supported by data backbone organization
Training, coaching, and consultation for community on understanding, using, and valuing data
Central repository of shared public data available online freely and publicly
Central access point for shared protected data available as appropriate
Data analysis services provided directly and/or via facilitated connections with researchers/analysts
Maintained data ecosystem map
Platform for sharing analysis and presentations with internal and external colleagues

AACIS formed (late 90s)

Rebranded CI:Now ('08)

UTSPH staffing contract ('09)

"Data Nirvana" meeting (2/16)

"Small group" formed (8/16)

Product Vision Board (9/16)

Alamo Regional Data Alliance (9/16)

Interim Steering Cmte (10/16)

CI:Now staffing (10/16)

Alliance convening (3/17)

Steering Cmte charter (5/17)

Steering Cmte elections (7/17)

Workgroups launch (9-10/17)

Steering Cmte launch 8-9/17)

How to get involved

- Run for Steering Committee
- Workgroups: propose, lead, join
- Agile scrum: submit user stories, join demo, host demo
- Just stay in the loop for now: mailing list, newsletter
- Raise fifty squillion dollars for the cause

Fill out an Interest Sheet!

Trustworthy.
Neutral.
Timely.

Laura.C.McKieran@uth.tmc.edu
CINow.info
210.276.9007
<http://cinow.info/newsletter-signup/>

Credits:

Clarissa Ozuna, PhD(c)
Norma Garza, DrPH(c)
Courtney Denton, MPH

How can we help you?

