

Building our local data capacity

IIMS/CTSA Leadership Advisory Council

December 4, 2017



Community Information Now

Local data that's trustworthy, neutral, and timely

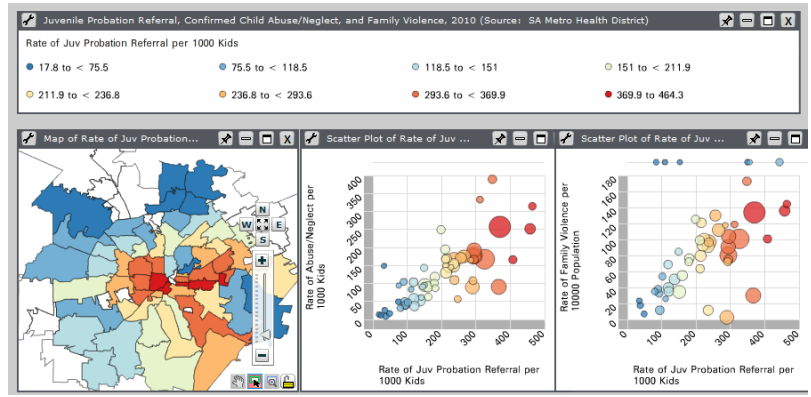
Laura McKieran, Executive Director

Quick Intro to CI:Now

- Nonprofit local data intermediary
- Annual budget ~\$450K
- Four staff + contracted tech services
- UT School of Public Health in SA is partner and staff “home”, plus academic resources, data access
- Geographic focus: Bexar, Comal, and 10 other counties surrounding
- Cover all issue areas, esp. education and health & human services
- Active local partner in National Neighborhood Indicators Partnership (NNIP)

Five ways we help

1. Open up access to timely, relevant, neutral data
2. Assess and monitor community conditions
3. Assist in understanding and using data
4. Consult on the development of outcomes/results and indicators and selection of data sources
5. Bring others together to build our local capacity to use data to improve quality of life: Alamo Regional Data Alliance



This is Progress

Select a cause below to see progress made within indicators.

- ARTS & CULTURE
- CIVIC ENGAGEMENT
- COMMUNITY SAFETY
- DOWNTOWN DEVELOPMENT
- ECONOMIC COMPETITIVENESS
- EDUCATION
- ENVIRONMENTAL SUSTAINABILITY
- FAMILY WELL-BEING
- HEALTH & FITNESS
- NEIGHBORHOOD TRANSPORTATION

Health & Fitness

VISION:
In 2020, San Antonio residents are among the healthiest in the country.

San Antonio promotes well-being by providing healthy and affordable food choices, convenient access to green spaces and recreational facilities, and a robust network of physical and mental healthcare designed to eliminate existing health disparities in the community.

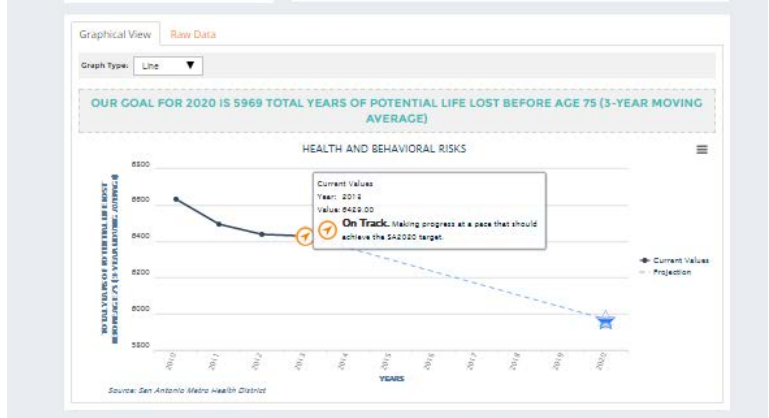
HOW WILL WE GET THERE?

- Reduce Obesity
- Improve Maternal and Child Health
- Reduce Diabetes Rate
- Reduce Teen Birth Rate
- Increase Access to Health Care
- Reduce Health and Behavioral Risks

REDUCE HEALTH AND BEHAVIORAL RISKS

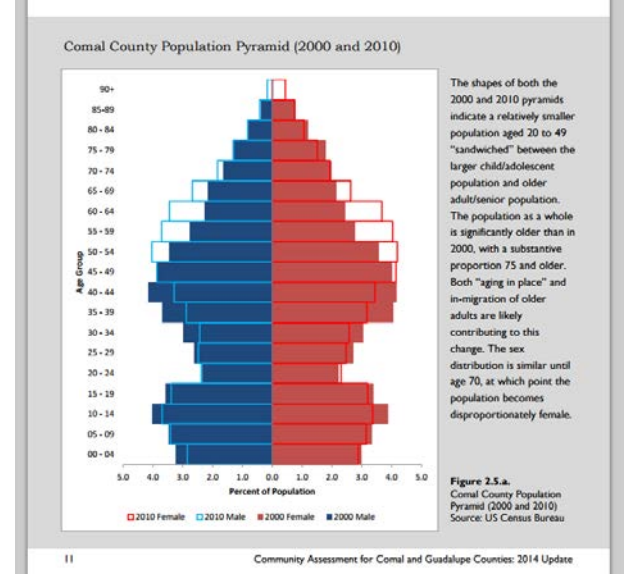
On Track

If we reduce health and behavioral risks, more people will live longer. We're currently seeing a decrease in potential life lost from our community, an indicator that measures years of life lost from premature death. This means our community as a whole is more likely to reach old age unhindered by health and behavioral risks, and we are on track to reach our SA2020 goal.



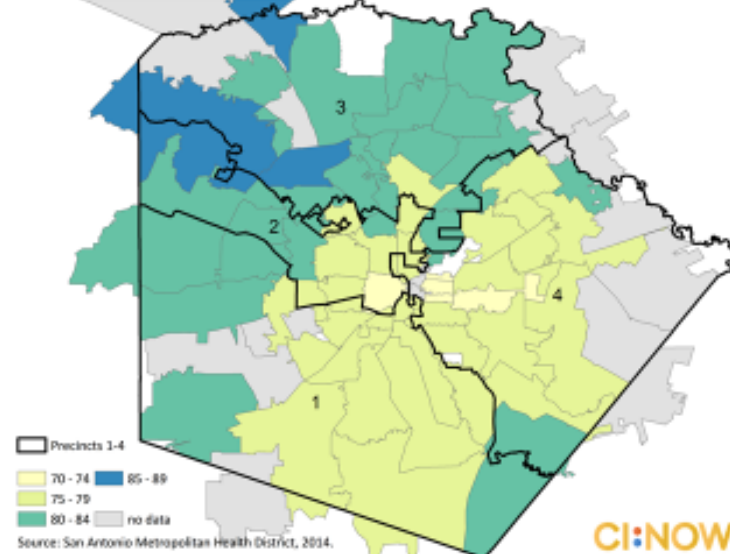
2.5 Age Structure: Comal County

The population pyramid below shows the age distribution by sex for Comal County in 2010 (outlined bars) superimposed on the 2000 distribution (solid bars). Each bar represents one five-year age group as a percent of total population. The blue and red areas of the bar represent males and females, respectively. The data are from the US Census Bureau's Decennial Census.



Life Expectancy by Zip Code for Bexar County Commissioners Precincts

Life expectancy at birth in years



Data Explorer

nowdata.cinow.info

Curated, searchable repository of online data resources

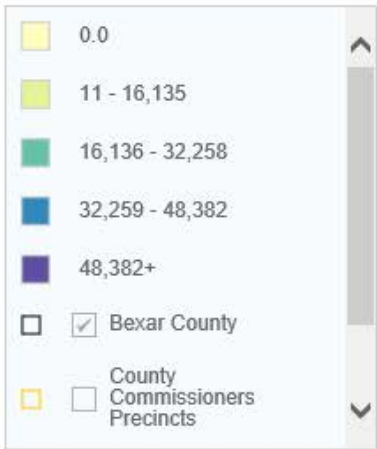
Live but maintenance not funded

The screenshot shows the NOWDATA Data Explorer interface. At the top, the logo reads "NOWDATA" with the tagline "DISCOVER » CONNECT » ACT". Navigation links include "Home", "About NOWDATA", "Contact Us", "CI:NOW", "NOWCastSA", and "NOWTech". The main content area displays "Exploring: All Indicators" for "Counties: Bexar," with various filters for "Scopes" and "Formats". A list of indicators is shown, including "Housing and Transportation (H+T®) Affordability Index" (2011-2011) and "Zoning" (2012-2012). A yellow callout bubble points to the "All Indicators" text, labeled "current selection criteria". Another yellow callout bubble points to the "Zoning" indicator, labeled "change selection criteria". On the right, a search bar is present, along with a "Topic:" dropdown menu (currently set to "All Topics") and a "Limit by" section with checkboxes for counties (All, Bandera, Comal, Gillespie, Karnes, Kerr, Wilson, Bexar, Frio, Guadalupe, Kendall, Medina) and geographic scopes (Address, Block Group, City, Congressional District, County Precinct, Metropolitan Area, Other, School District, Voting Precinct, Bexar Co. Assessment Sector, Census Tract, City Council District, County, County Sector, Neighborhood, Parcel, State, Zip). The page number "5" is visible in the bottom right corner.

What is the Viz-a-lyzer?

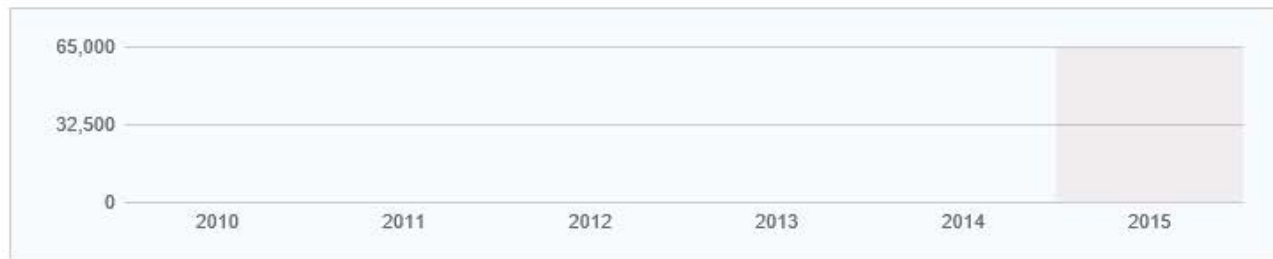
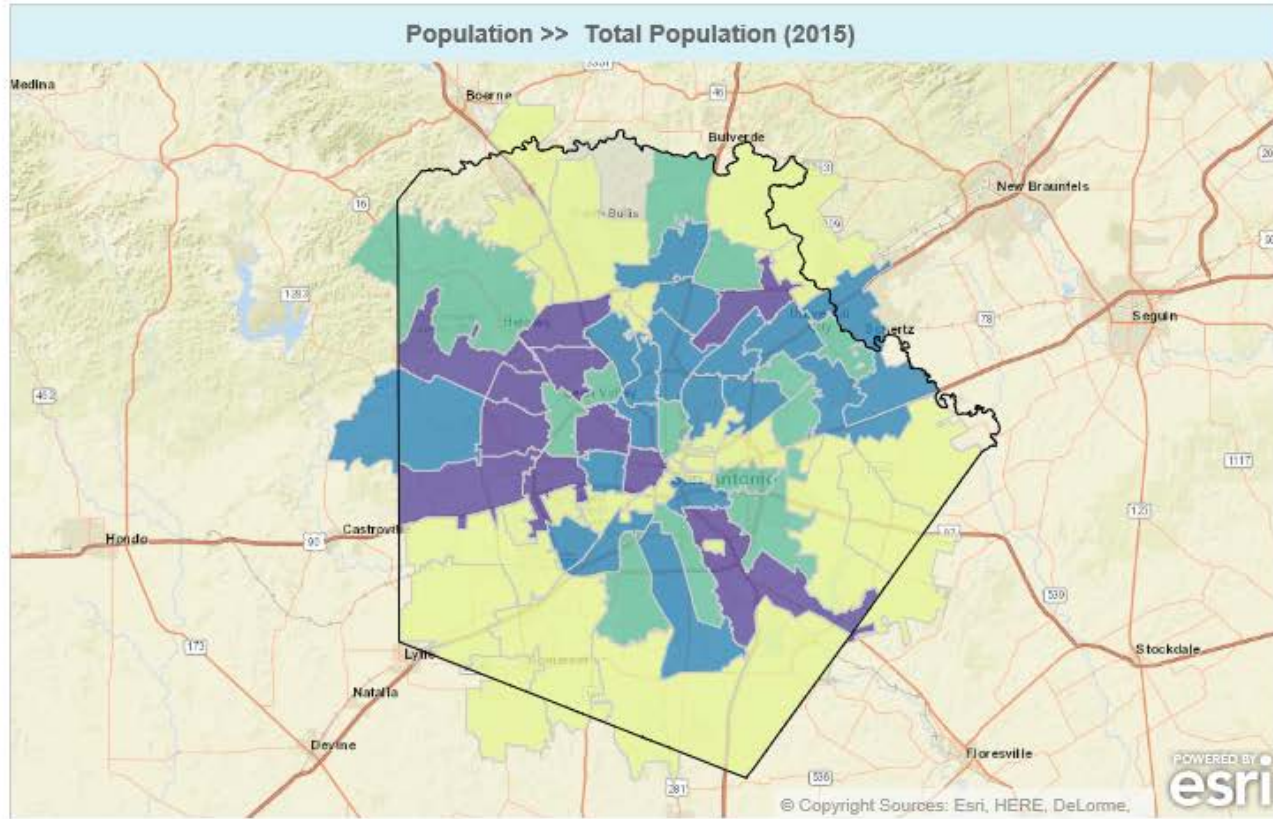
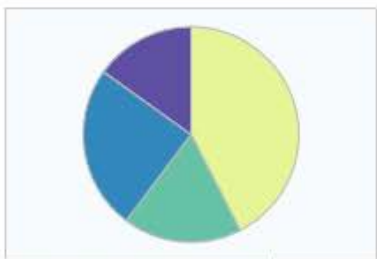
- Interactive tool that allows individuals to explore and analyze Bexar County data
- Viz-a-lyzer key features:
 - Maps key indicators by zip code and year
 - Provides county and state benchmark data where available
 - Shows the best and worst zip codes for a given indicator
 - Charts a five-year trend line where available
 - Filters by school district or county precinct
 - Saves and prints image

Data Filter



Population Definition:
Total population.

Data Notes:
The estimated percentages presented are as reported (see Data Sources). Margins of error associated with each estimate are reported as upper (ul) and lower (ll) limits. The following special classifications are defined and valued as:

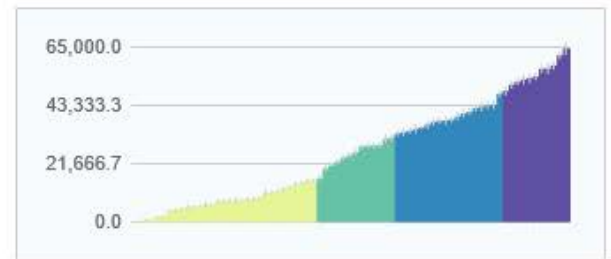


Help Print Share

Name	Total Population (2015)
Bexar County	1,897,753
Texas	27,469,114
United States	321,418,821

Name	Total Population (2015)
78002	8,034
78015	11,001
78023	28,014
78069	5,652
78073	7,782
78101	7,720
78109	37,524
78112	7,665
78148	21,040

Clear Filter



The Alamo Regional Data Alliance

Alamo Regional Data Alliance milestones

- Late 1990s: AACIS (now CI:Now) formed
- Feb 2016: Then-mayor's office convened "Data Nirvana" brainstorming (50-60 attendees)
- Aug 2016: "Small group" convened to draft a plan; became Interim Steering Committee
- Mar 2017: Vision Convening (68) to vet purpose, goals; i.d. wins
- May 2017: Community Strategy revised
- Aug 2017: alamodata.org launch; membership drive started
- Oct 2017: Steering Committee elected; partnership drive started
- Nov 2017 and forward: workgroups, projects, outreach, coordination

Steering Committee: six categories, 17 seats, staggered terms

Category (seats)	Community Represented	Example Organizations
Local government and utilities (4)	Elected officials and staff of local city and county governments; Public and quasi-governmental organizations that maintain or manage infrastructure/utilities for a public service	COSA, Bexar County, other local governing bodies; CPS, SAWS, VIA
Service providers (4)	Organizations with a primary focus on direct provision of health, human, or education services	SAHA, Metro Health, CHCS, school districts, Goodwill, Families Empowered
Planning and advocacy (2)	Public and nonprofit organizations with a primary focus on planning, civic engagement, community development, or advocacy	The Health Collaborative, SA2020, P16Plus, Alamo MPO, AACOG, SARA
Philanthropy (2)	Foundations and nonprofits whose principal purpose is to aid in activities serving the public good	United Way, Kronkosky Charitable Foundation, San Antonio Area Foundation
Other organizations (4)	Other for-profit enterprises and associations representing private business; Public and private higher education, research agencies, and technology-focused organizations	H-E-B, Chamber of Commerce, UIW, UTSA, SWRI, HASA, Google Fiber, Code for SA
Community member (1)	Open representation	Community members

How ARDA engages people

- Governing/steering (“small group”, Interim SC, Steering Committee)
- Individual memberships (snowball)
- Organizational partnerships (snowball)
- Agile scrum: submit user story, participate in or host sprint demo
- Large convenings
- General communications (alamodata.org, CI:Now newsletter)
- Informal in-person conversations
- Future:
 - Standing workgroups (e.g., data privacy & security; engagement)
 - Ad-hoc workgroups (e.g., education integrated data system)

GUIDING PRINCIPLES

The Alamo Regional Data Alliance's guiding principles represent the shared values that drive all organizational behaviors and actions. Staying true to these guiding principles ensures ARDA stays committed to its mission and realizing its vision.



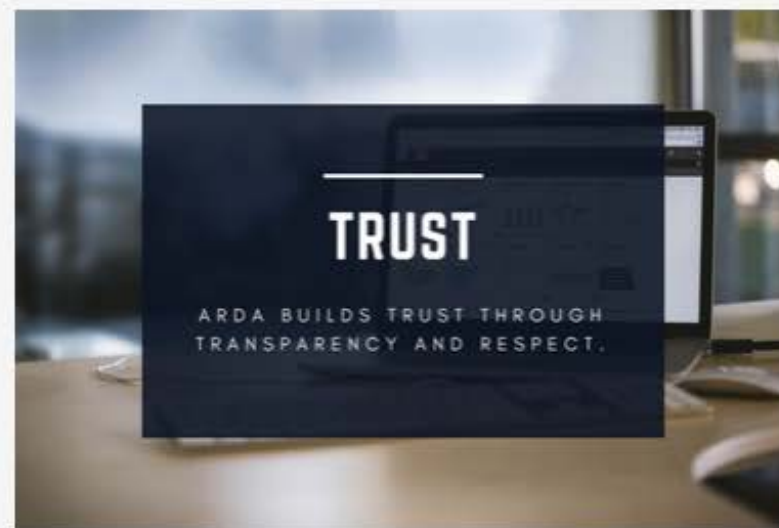
COMMUNITY

ARDA has a positive impact on the community as a whole, not a select few; is responsive to local emergent issues and needs; and is led by a diverse group of representatives elected by the community.



COLLABORATION

ARDA is connecting disparate groups to uncover common needs, foster creative solutions, and maximize impact; and has balanced representation among membership, leadership, and stakeholders.



TRUST

ARDA is open and public in membership and process; and is respectful of and sees the value in all contributions, past and present.

How we build trust

- (Excessive) transparency and (absurd levels of) communication
- Collaborative infrastructure and process with mutual accountability
 - Elected governing body with CI:Now in non-voting support role
 - Every decision's made by consensus and/or voting
- Formal policies and procedures posted publicly
 - ISC and SC Charters
 - Project Prioritization Process & Criteria
- How we treat each other
 - Be very, very serious about not steamrolling people or reinventing the wheel
 - Check your ego at the door
 - Genuinely value what different people bring
 - Plan for and deal with turf issues

Toughest challenges

- Hard to communicate about; abstract concepts with no established model to point to
 - It's not a new nonprofit
 - It doesn't have a budget (or a money fairy)
 - The difference between and value of ARDA vs. CI:Now
- Balancing ROI for those who prefer careful planning vs. quick action
 - ... or foundational infrastructure vs. shiny objects
 - ... or one issue area vs. another
- Backbone staffing: funding, efficiency of staffing, project mgmt.
- We're intentionally aiming for the sky, which means a long to-do list

Trustworthy.
Neutral.
Timely.

Laura.C.McKieran@uth.tmc.edu

CINow.info

210.276.9007

<http://cinow.info/newsletter-signup/>

How can we help you?

Credits:

Norma Garza, DrPH

Courtney Denton, MPH

ARDA Interim Steering Committee
and Steering Committee

The logo for CINOW features the letters 'CI' in a bold, orange-yellow font, followed by a colon consisting of two stacked circles (the top one is orange, the bottom one is blue), and the letters 'NOW' in the same orange-yellow font.