

# What's the **2020 Census** got to do with **racial equity and justice**?

Peaceful protests across the U.S. demand an end to police brutality and the systematic racism that supports it, taking a stand because **black lives matter**. Why would we care about the Census right now?

## Representation

The decennial Census determines how many seats we get in the U.S. House and serves as the basis for state districting. Voting won't be nearly as effective if we can't prove our population size.

## Resources

The decennial Census drives whether we get our fair share of more than \$1.504 *trillion* in federal dollars each year. We need these funds for health, education, housing, food assistance, roads, and more.

If we don't get it right in 2020,  
**we'll wait 10 years for our next chance.**

**And we're not getting it right.** Our response rates so far show **serious racial inequity.**

**All Bexar County** census tracts **62%\***

Tracts where:

50%+ of population is **white** **70%**

15%+ is **Black or African American** **59%**

Turn this page over to see those rates on a map.

\*Average cumulative self-response rate for tract group as of 8/14/2020. Source: U.S. Census Bureau

# Racial Equity & the 2020 Census

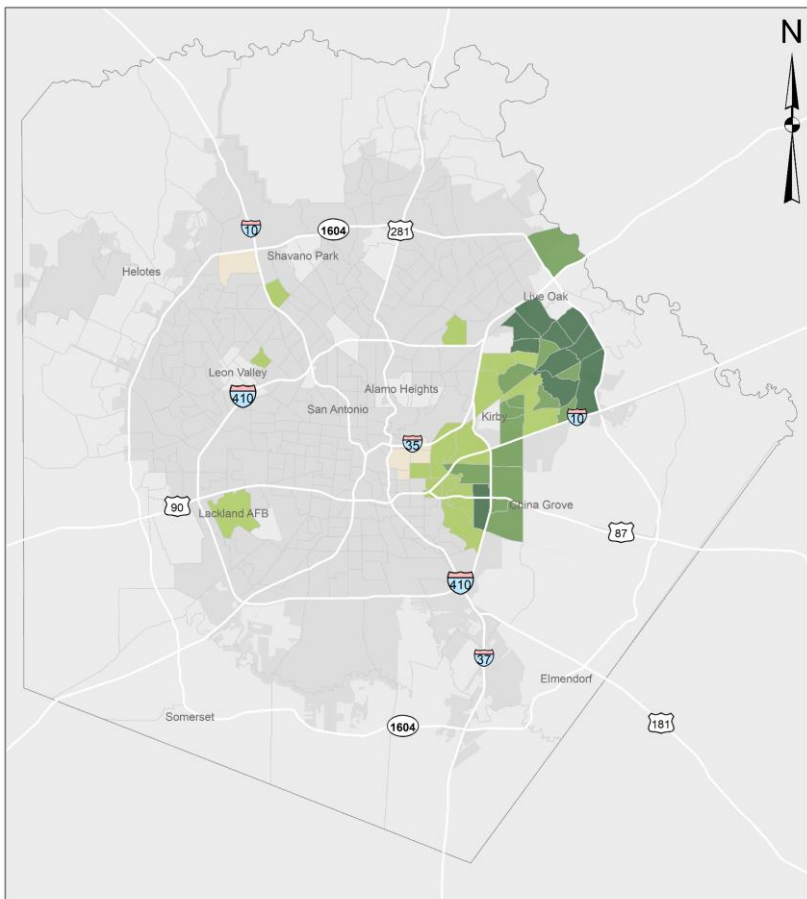
Response rate to date

Lower

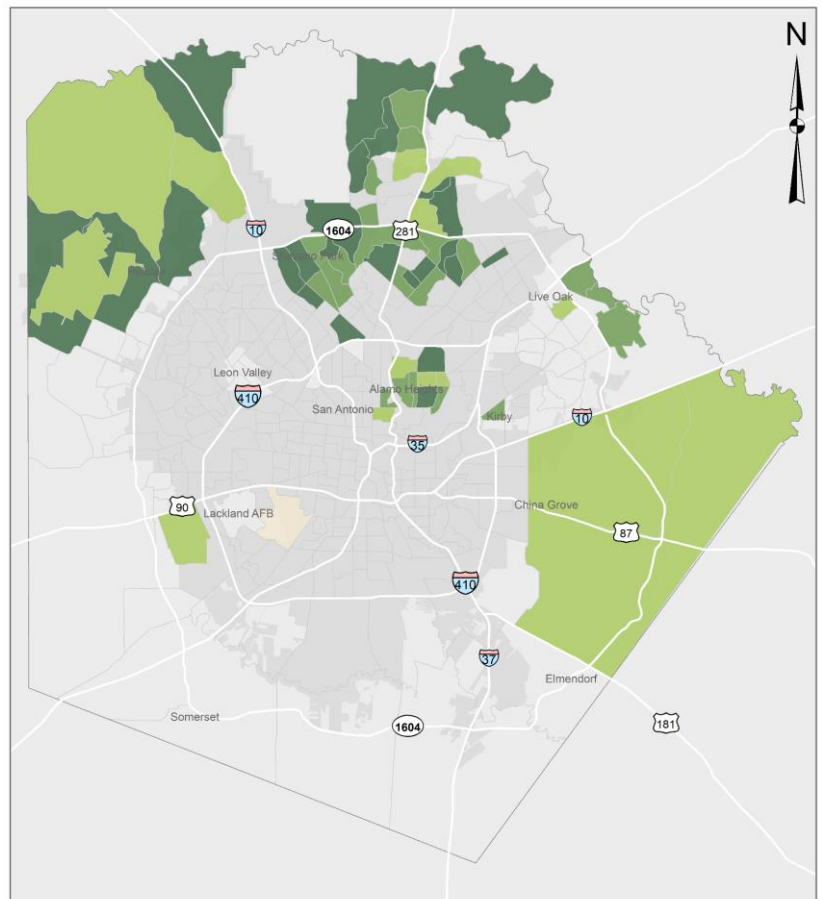


Higher

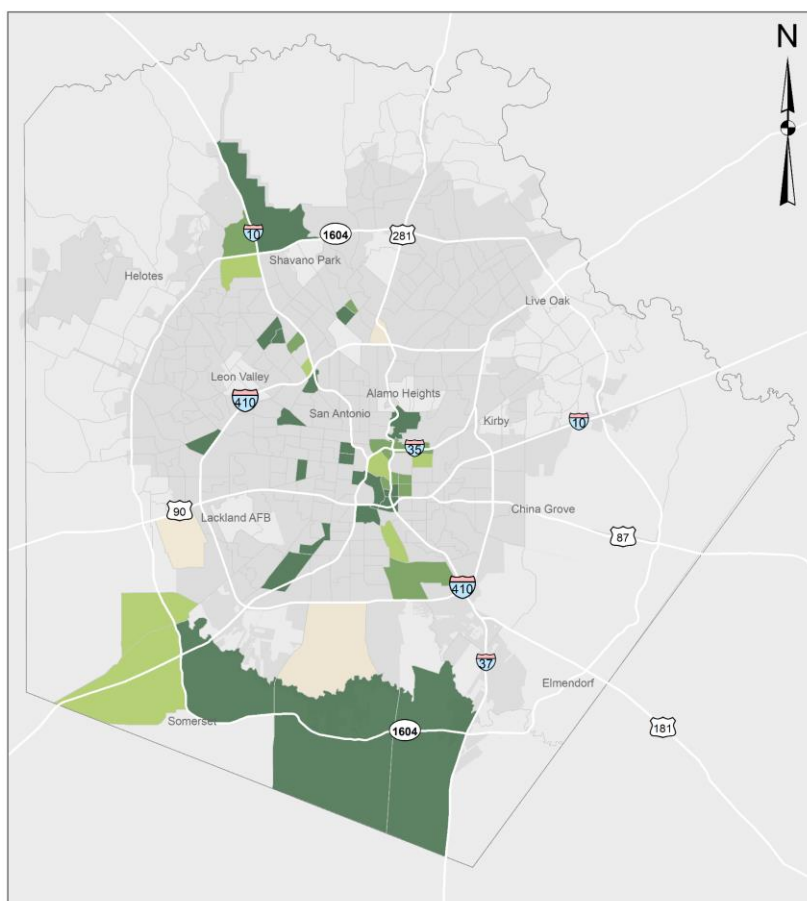
Tracts with population 15%+ Black  
Average response rate of **59%**



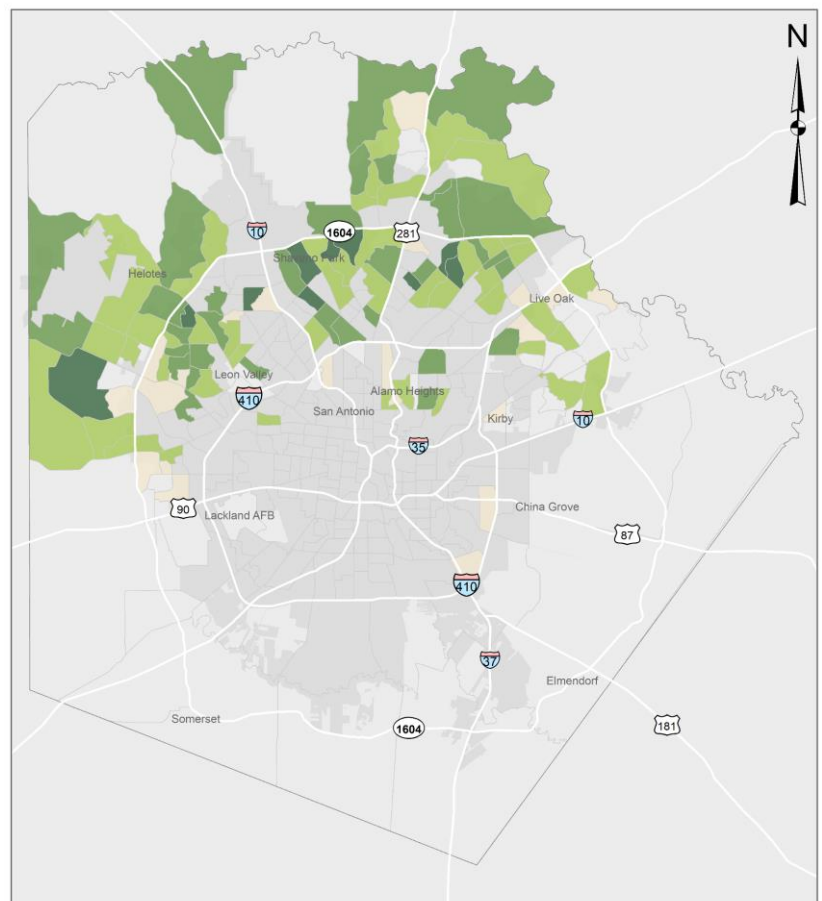
Tracts with population 50%+ white  
Average response rate of **70%**



Tracts with response below 50%  
Pop. **7%** black, **65%** Hispanic, **21%** white



Tracts with response above 67%  
Pop. **6%** black, **45%** Hispanic, **42%** white



SAN ANTONIO AREA  
AFRICAN AMERICAN COMMUNITY FUND



San Antonio Area Foundation  
Where Giving and Community Connect